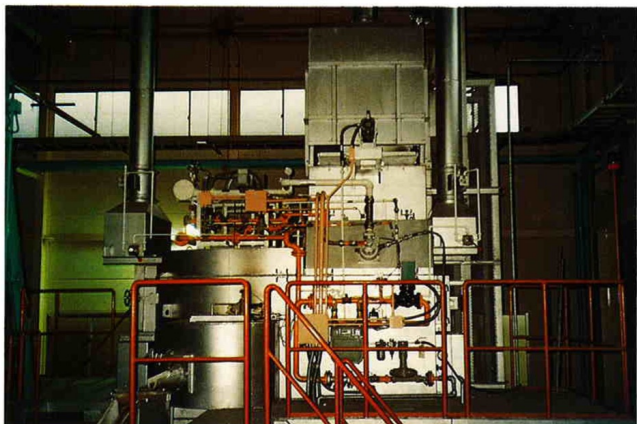


This Melting and Holding Furnace is designed for continuous operation and is suitable for aluminium die-casting and aluminium casting industries.

Equipped with "Super Low Speed Luminous Flame Burners", it performs better than conventional furnaces by offering good temperature uniformity of molten metal coupled with excellent energy savings.

Given the nickname "Lumi-Mate", some of the remarkable characteristics of the furnace include:-



1. SUPERIOR ALUMINIUM MELT QUALITY

Special luminous flame burners carefully selected by DAIKI ensures that hard spot formation and gas absorption problems are minimal. This translates into higher quality melts as molten metal that flows into the holding chamber has very little oxidation.

2. MELTING OF ALUMINIUM ALLOYS

This furnace is capable of melting various types of aluminium alloys.

3. LOW NOISE POLLUTION.

Using low speed burners, the furnace operates at a relatively low noise level of about.

Using luminous flame burners coupled with efficient furnace design, it is possible for fuel consumptions to be lower than 500,000 kcal/metric ton.

5. GOOD TEMPERATURE CONTROL

It is possible to regulate the temperature of the molten metal to within ± 3 degrees Celsius.

6. CHOICE OF FUELS

The furnace can be designed to run on the following fuels:- Town/City Gas, Natural Gas, Propane Gas, Butane Gas, Heavy Oil Grades A & B, Light Fuel Oil, Kerosene, etc.

7. LOW MAINTENANCE COST

Constructed in modular units, the cost of maintaining the furnace is low. It is possible for the furnace to be maintenance-free for more than 5 years.

8. FAST INSTALLATION AND SHORT START-UP TIME

The furnace only requires about 3 days to install and can start operating in a very short time.

9. EASE OF CLEANING

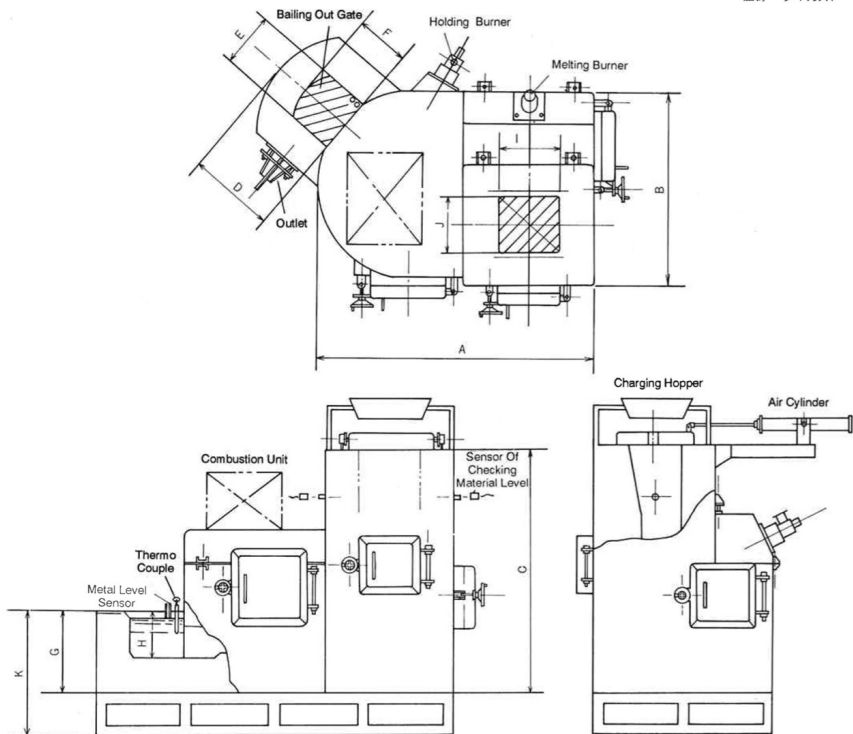
A lot of thought has been put into the design of the furnace to ensure that there are no dead corners in the furnace chamber. This prevents hard clumps of oxidants from sticking onto the furnace refractories and makes the chore of cleaning very easy.

10. AUTOMATIC SYSTEM (OPTIONAL)

It is possible to automate the furnace even further by installing an optional ancillary equipment to charge ingots, hot returns (runners, gatings), etc into the furnace.

SER Model Furnace Specification

Type	Melt Rate (Kg/Hr)	Holding Cap. (Kg)	Melt. Burner Cap. (Kcal/Hr)	Hold. Burner Cap (Kcal/Hr)
SER- 50	50	300	50,000	50,000
SER-100	100	400	80,000	80,000
SER-150	150	500	80,000	80,000
SER-200	200	650	120,000	80,000
SER-300	300	1050	150,000	120,000



* The furnace can be designed to accommodate various equipment layout.

SER Dimensions

	SER-50	SER-100	SER-150	SER-200	SER-300
A	1818	2030	2130	2218	2630
B	1218	1370	1470	1470	1630
C	1800	1950	2150	2150	2100
D	600	650	700	700	750
E	350	400	450	450	550
F	350	400	450	450	500
G	560	610	610	610	690
H	300	350	350	350	430
I	350	450	500	550	600
J	350	400	450	450	450



DAIKI ALUMINIUM INDUSTRY CO. LTD.

ENGINEERING OFFICE 46, 3-CHOME, MINAMI-KYUHOJI, YAO CITY, OSAKA 581, JAPAN.
 TEL. (0729) 93-3205 FAX. (0729) 91-1909
 HEAD OFFICE NICHIEI BLDG., 4-8 TOSABORI 1-CHOME, NISHI-KU, OSAKA, 550, JAPAN.
 TEL. (06) 444-2751 FAX. (06) 444-2797 TELEX. 5245620 DIK O J