

HISHINUMA
DIE CASTING MACHINE

Zinc
Hot Chamber Type
Die Casting Machine

CX-F2 Series HOT CHAMBER DIE CASTING MACHINE

CX-F2 Series



CX200F2



CX25F2



CX50F2



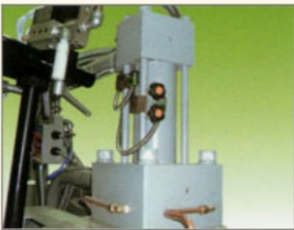
CX100F2

Features of F2 series

Adopt a non-contact proximity switch for 2 steps changing mechanism for injection slow/fast that is resulted in long life/

- Standard equipped sequencer control system and 8 inch liquid crystal color display touch panel.
- Corresponds to many languages: Japanese, English, Chinese, Korean and Thai (Option setting)

【 Standard equipment. 】



Standard equipped external limit switch with injection cylinder. It made possible easily adjustment the change over position for injection slow/fast.



Illustration panel on the control box allows all management information for the temperature of furnace and heaters



Storage the various kinds of casting condition up to 20 type dies. Needless to resetting the casting condition every tie die changing



Monitoring the output of hydraulic valve and each limit switch.



Shot counter allow the management of injection parts individually and draws the accurate information of change date



Storage and indication alarm records and operation hours of machine and equipment.

【 Option equipment. 】



Assist the operator in obtaining the optimum setting of injection plunger position, injection speed and pressure.



The display of die locking force allows easy adjustment of the die height. And it relates to the interlock function for injection.

HISHINUMA
 DIE CASTING MACHINE

Zinc
 Hot Chamber Type
 Die Casting
 Machine

CX-F2 Series HOT CHAMBER DIE CASTING MACHINE

CX-F2 Series

CX25F2



CX50F2



CX100F2



CX200F2

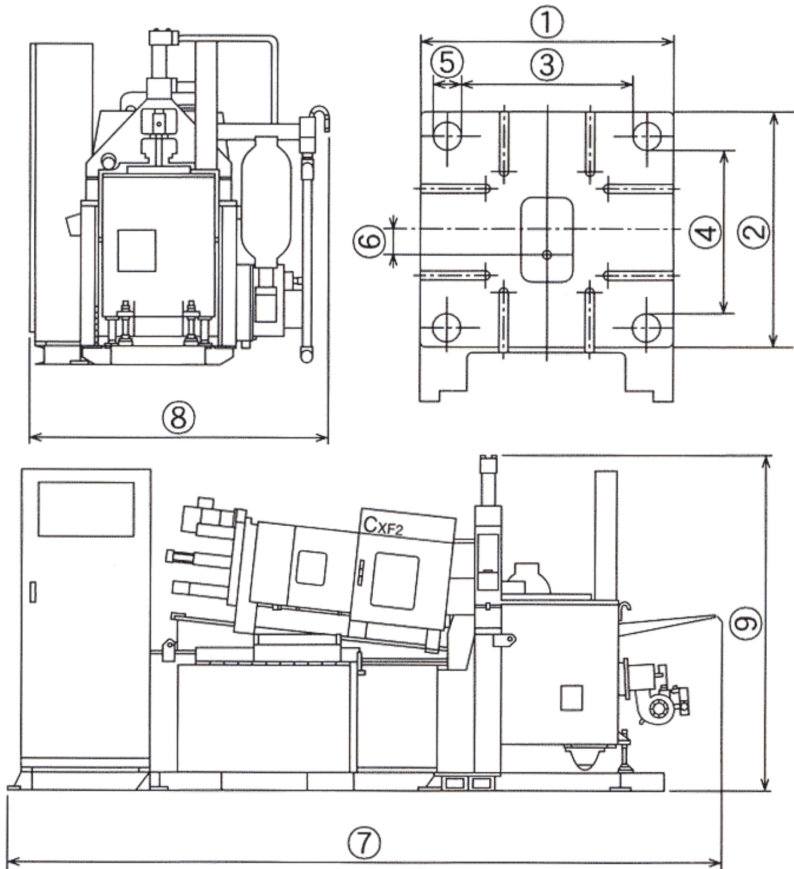


● Technical Data

Unit	CX08F2	CX15F2	CX25F2	CX40F2	CX50F2	CX100F2	CX150F2	CX200F2	CX250F2	CX350F2
Locking force (kN)	80	160	250	400	500	1000	1500	2000	2500	3500
Space between Tie bars (mm)	160×170	165×225	271×271	261×303	302×326	402×402	460×460	520×520	530×530	600×600
Die Stroke (mm)	107	122	155	180	215	250	380	320	450	500
Die height (mm)	120~180	150~240	140~330	170~328	170~340	250~460	220~500	300~550	300~600	300~700
Injection force (kN)	9.5	21	32	34	52	82	99	109	126	164
Injection stroke (mm)	70	100	100	120	130	150	200	200	200	230
injection port position (mm)	0/-15	0/-25	0/-40	0/-50	0/-65	0/-85	0/-100	0/-125	0/-125	0/-150
Ejector Force (kN)	6	16	21	30	39	70	87	87	116	17.2
Ejector Stroke (mm)	40	40	50	60	70	70	90	80	100	120
Nozzle Touch Force (kN)	8	10	16	28	44	52	72	72	96	70
Nozzle Touch Stroke (mm)	100	156	180	180	175	230	300	250	400	400
plunger diameter (mm)	25	38	45	45	50	60	60	70	70	80
Casting pressure (MPa)	18.3	18.5	20.1	21.3	26.4	29.0	35.0	28.3	32.7	32.6
Casting area (Casting Efficiency100%)	43	86	124	187	189	344	428	706	764	1073
shot weight (Casting Efficiency75%) 】 (kg)	0.17	0.57	0.81	0.97	1.30	2.16	2.88	3.92	3.92	5.89
Dry Cycle Time (sec)	1.2	1.8	2.0	2.4	3.0	3.6	4.5	4.8	4.8	6.0
Working pressure (MPa)	6.0	7.0	10.5	10.5	10.5	10.5	10.5	10.5	14.0	14.0
Operation oil capacity (L)	115	120	140	200	195	300	350	500	500	600
Melting pot capacity (kg)	110	200	200	188	270	300	670	500	500	1200
Electric motor capacity (kw)	3.7	5.5	5.5	7.5	7.5	15	18.5	22	22	22
Machine operation power supply capacity (KV _a)	6	9	9	12	12	23	30	35	35	35
Electric furnace output (kw)	18.6	18.6	18.6	21.9	31.5	40.5	46.1	46.2	51	81.6
weight (ton)	1	2	3	3	3.8	5	8	9.5	12	18

CX-F2 Series (mm)

	CX08F2	CX15F2	CX25F2	CX40F2	CX50F2	CX100F2	CX150F2	CX200F2	CX250F2	CX350F2
(1)	265	330	406	438	542	612	720	850	870	990
(2)	255	291	416	397	511	641.5	740	830	870	1040
(3)	170	225	271	303	326	402	460	520	530	600
(4)	160	165	271	261	302	402	460	520	530	600
(5)	Φ30	Φ35	Φ50	Φ50	Φ58	Φ70	Φ85	Φ100	Φ110	Φ125
(6)	15	25	40	50	65	85	100	125	125	150
(7)	2690	3300	3820	3635	3915	4400	5080	5180	5775	6640
(8)	1300	1300	1595	1910	1845	2125	1820	2100	1895	2685
(9)	1600	1745	1760	1755	1840	1970	2230	2325	2390	2770



SINTAI 新台通商

壓鑄機 · 製品 · 自動化周邊 · 技術連鎖服務

Die-casting Machine · Products · Automatic Peripheral Equipment · Technical Service

www.sintai-corp.com

TEL : +886-2-86982393 服務處: 台北·台中·上海·廣東·山東